

The logo is a circular emblem. The outer ring contains the text 'Sohag Hand & Microsurgery Unit' in a light blue font. Inside the ring is a stylized illustration of two hands, one holding a surgical instrument, set against a background of radiating lines.

Tips and Tricks in Major Limb Replantation

Hassan Noaman

Professor of Orthopedics and Traumatology

Sohag University ,

Egypt

Prof. Hassan Noaman





Prof. Hassan Noaman



Prof. Hassan Noaman

Patients and Methods

- Done in Hand & Microsurgery unit, Sohag university hospital between March 2000 and March 2014.

Patients and Methods

- 46 Patients underwent replantation.
- Males → 27 , Females → 19 .
- Upper limb (Above Elbow A. → 13 , Below Elbow A. → 17).
- Lower limb (Above Knee A. → 6 , Below Knee A. → 10)

Goals of treatment

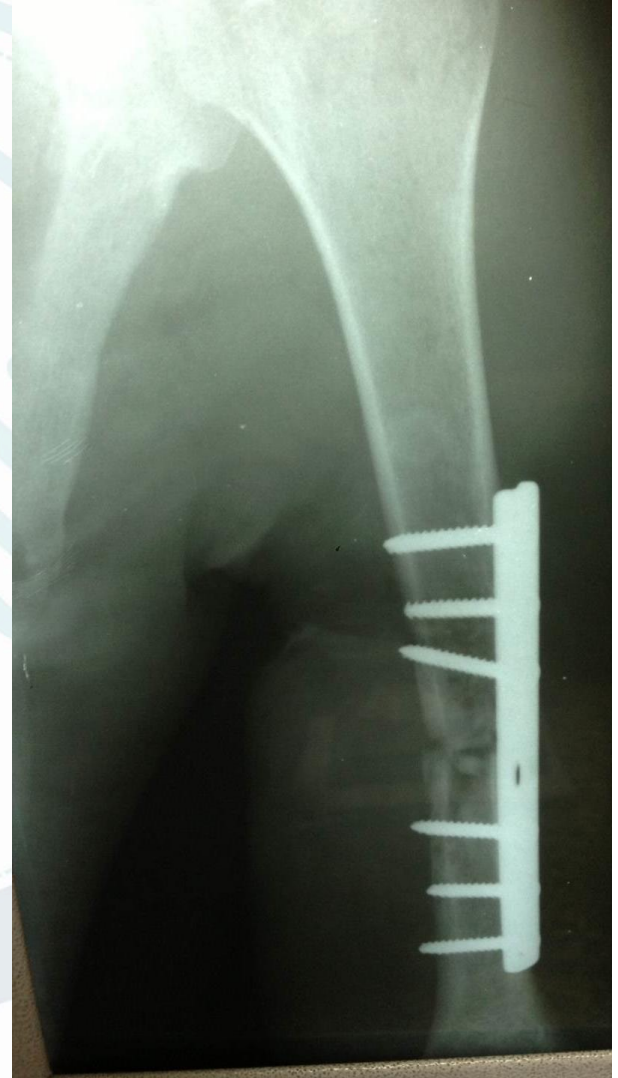
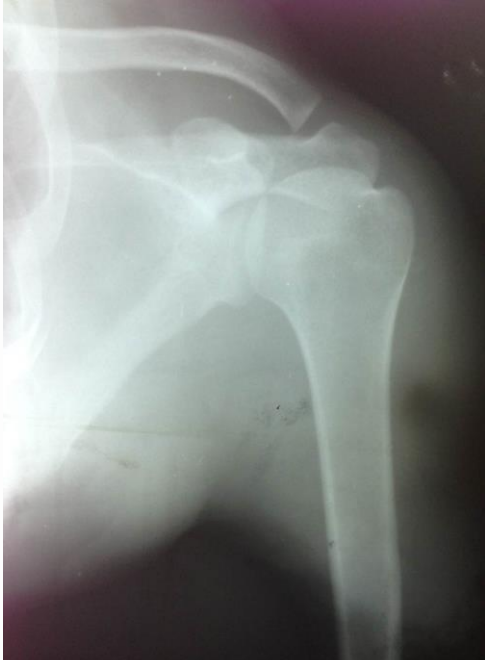
1. Save life
2. Save the limb





Principles of treatment

1- Stability

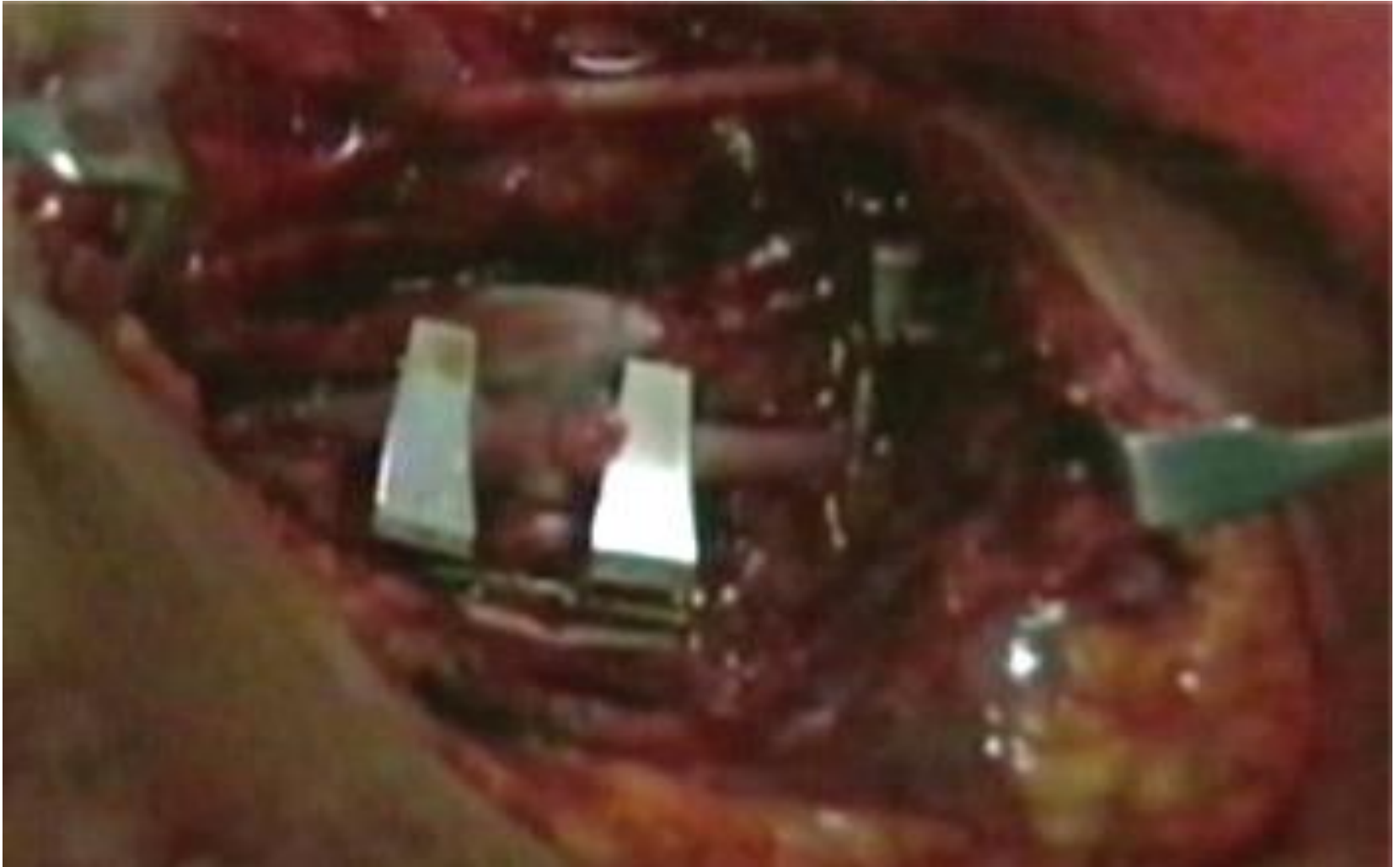


2- Debridement

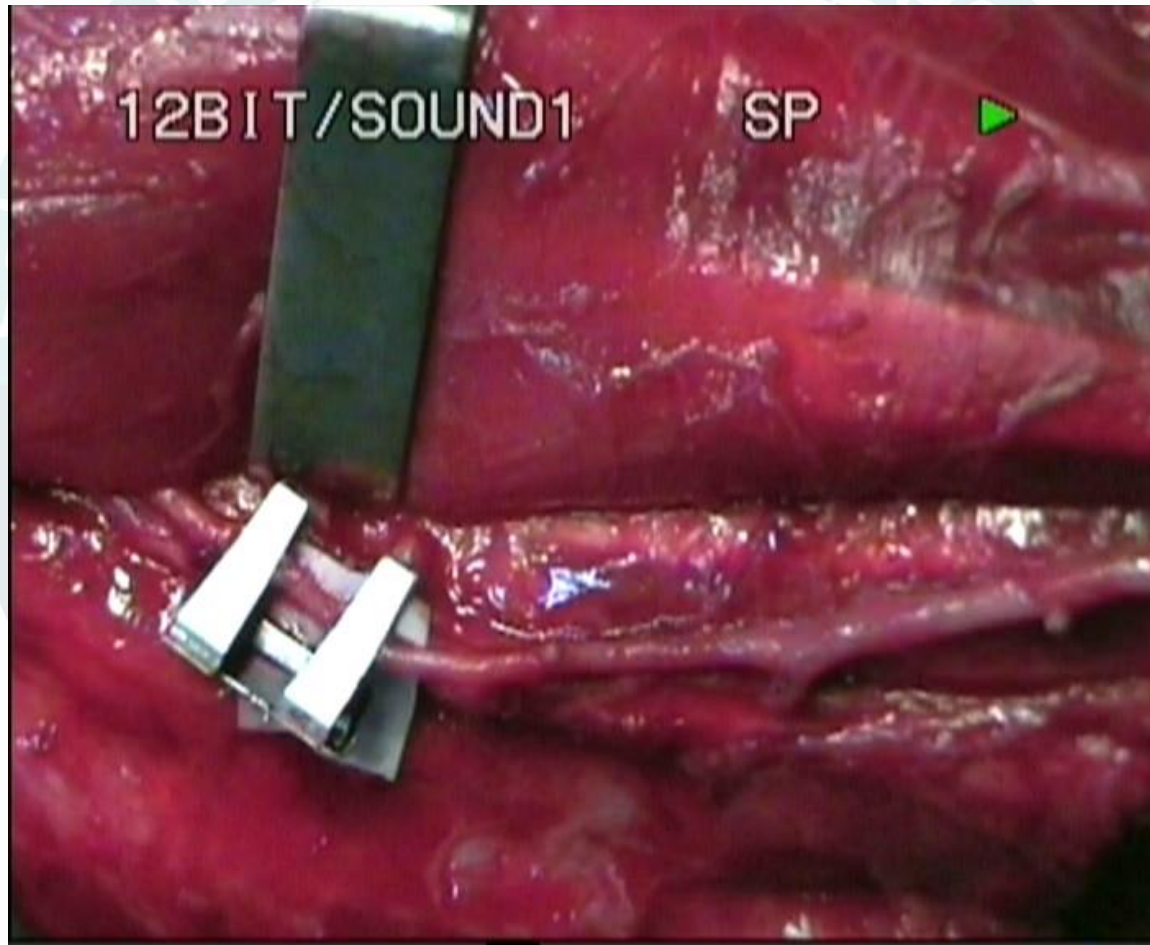


3 - Microvascular & Microneural repair

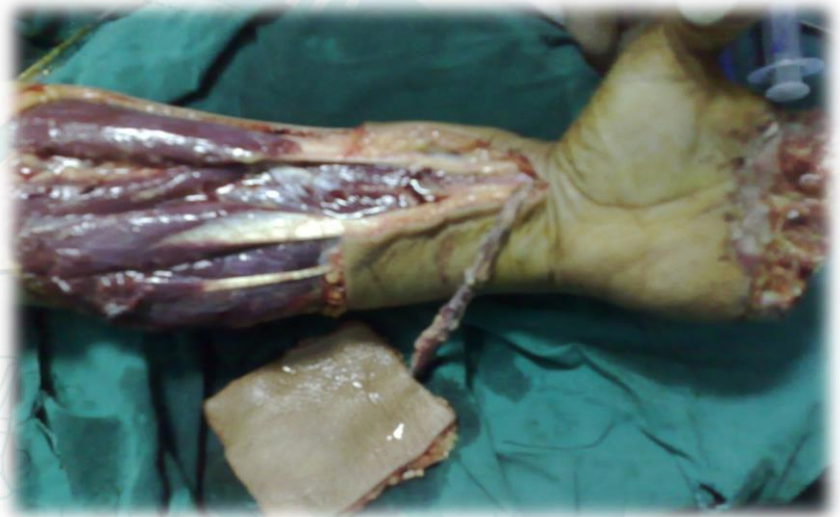
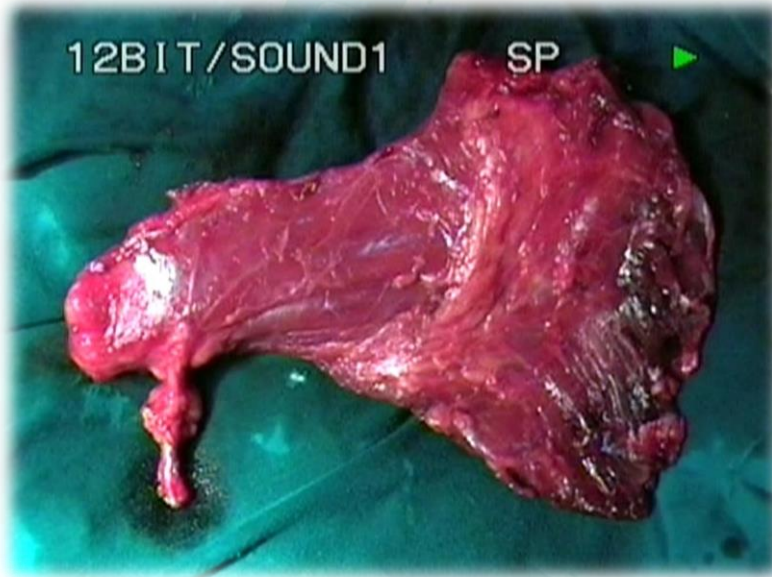
Repair



Reverse vein graft



4- Soft tissue coverage



Exclusion Criteria

1. Above 60 yrs.
2. Chronic medical diseases.
3. Patient under chemo- or radiotherapy.
4. Vital organs affected (liver, lung, kidney ..).
5. Ischemia time > 10 hrs.
6. Exhausted team (surgeons) or equipment.
7. Mangled extremity severity score > 8.

Mangled extremity severity score (MESS)

Type	Characteristics	Injuries	Points
Skeletal/soft-tissue Group			
1	Low-energy	- Stab wounds, simple closed fractures, small-caliber gunshot wounds	1
2	Medium-energy	- Open or multiple-level fractures, dislocations, moderate crush injuries	2
3	High-energy	- Shotgun blast (close range) high-velocity gunshot wounds, crush injury	3
4	Very high-energy	- Above + gross contamination, soft tissue avulsion.	4
Shock group			
1	Normotensive hemodynamics	- BP stable in field and in operation theatre	0
2	Transiently hypotensive	- BP unstable in field but responsive to intravenous fluids	1
3	Prolonged hypotension	- Systolic BP less than 90mmHg in field and responsive to intravenous fluids only in operation theatre	2
Ischemia group			
1	None	- A pulsatile limb without signs of ischemia	0*
2	Mild	- Pulse reduced or absent but perfusion normal	1*
3	Moderate	- Pulseless; parasthesia, diminished capillary refill	2*
4	Advanced	- Pulseless, cool, paralyzed and numb without capillary refill	3*
Age group			
1	< 30 years		0
2	> 30 - <50 years		1
3	> 50 years		2

*Points x 2 if ischemia time exceeds six hours, BP - Blood pressure

Results

Overall Success rate

- Limb saving
- Limb function

80 %



**Thanks for
your attention**